

# MONTHLY MEMBERSHIP PROGRESS REPORT

District 3233G2

Results as of: 12/31/2019

GMT:

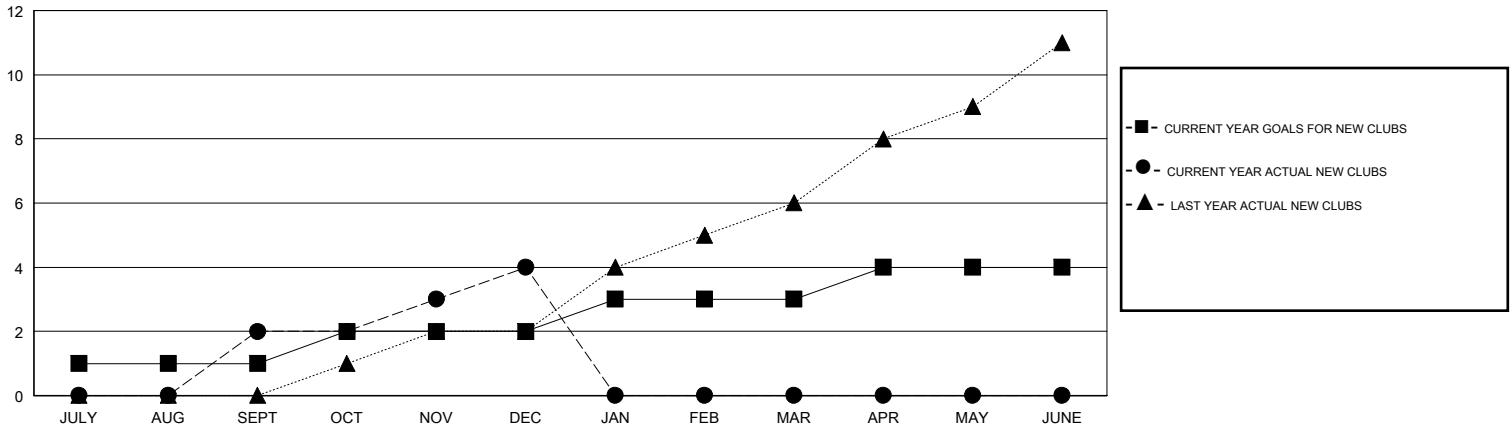
LOCATION INDIA

GMT CA

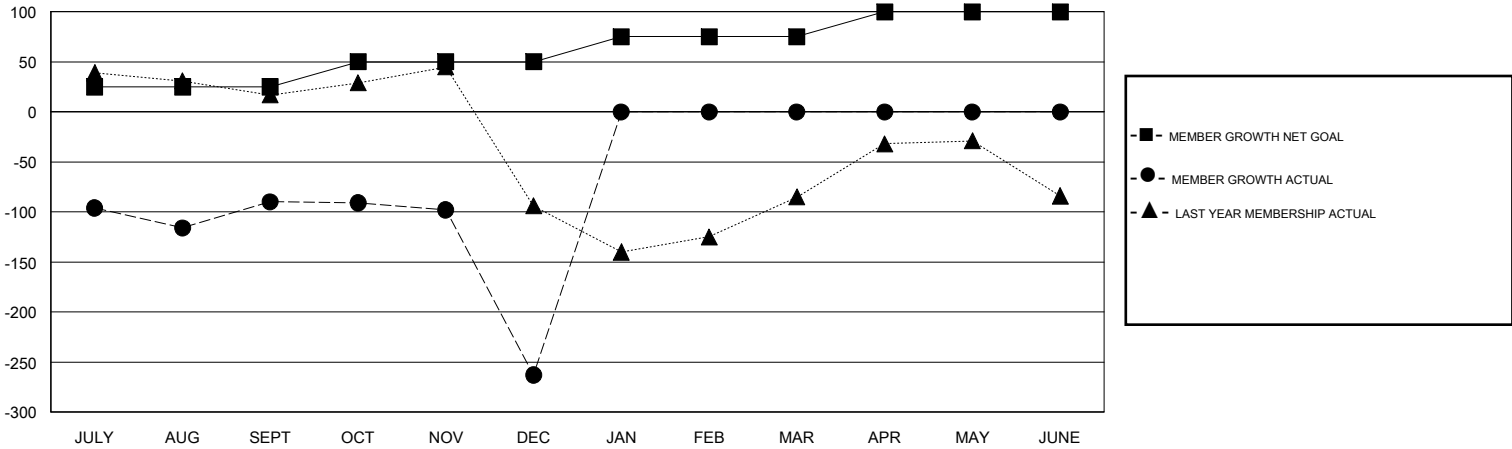
Clubs			
RESULTS FOR 2019-2020			
QUARTER	NEW CLUB GOAL	NEW CLUBS	DROPPED CLUBS
JULY/AUG/SEPT	1	2	1
OCT/NOV/DEC	1	2	3
JAN/FEB/MAR	1	0	0
APR/MAY/JUNE	1	0	0

Members			
RESULTS FOR 2019-2020			
QUARTER	MEMBER GROWTH NET GOAL	MEMBER GROWTH ACTUAL	DROPPED MEMBERS ACTUAL <small>(including transfers)</small>
JULY/AUG/SEPT	25	77	152
OCT/NOV/DEC	25	42	211
JAN/FEB/MAR	25	0	0
APR/MAY/JUNE	25	0	0

GOALS AND ACTUAL NEW CLUBS CUMULATIVE



GOALS AND ACTUAL MEMBERS CUMULATIVE



DROPPED CLUBS: 4	28 CLUBS OF 105 ADDED 1 OR MORE NEW MEMBERS	<u>GENDER DISTRIBUTION</u> MALE                      1,675 (65.61%) FEMALE                      878 (34.39%)
<u>DROPPED MEMBERS</u> DECEASED                      2 CLUB CANCELLED                      30 OTHER                      331 <hr/> TOTAL                      363	<a href="#">CLICK HERE FOR CUMULATIVE MEMBERSHIP DATA</a>	TOTAL FAMILY UNIT MEMBERS                      1,187 FAMILY MEMBERS PAYING HALF DUES                      708